

1. Introduction

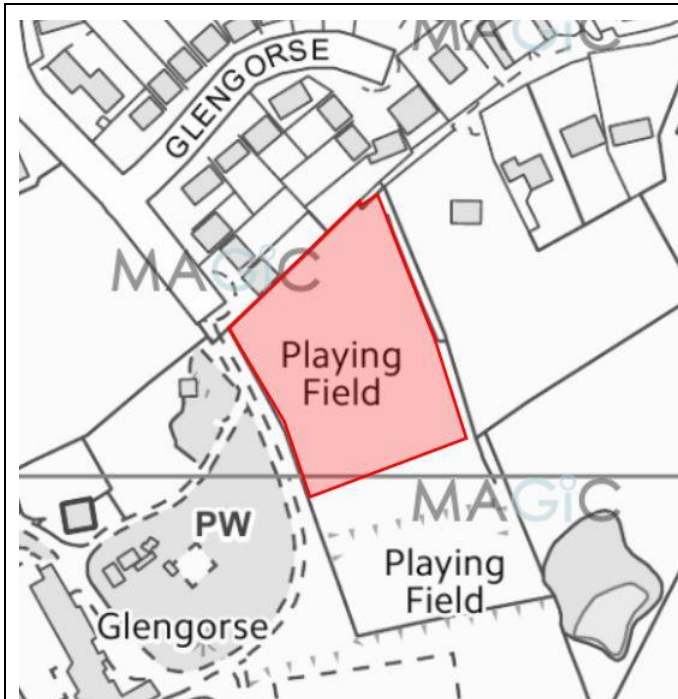
- 1.1. The Battle Civil Parish (CP) Neighbourhood Plan (NP) Steering Group, have prepared the following maps to show the Preferred sites following the AECOM and Steering Group analysis of offered sites and SHLAA suggestions.
- 1.2. Analysis methodology is covered in <Battle CP-NP Preferred sites list>.
- 1.3. The following maps show the chosen sites at readable scale to indicate their outline extent. Not shown in priority order for Battle and Netherfield.

NOTES:

- Plans are not at a specific scale – but generally taken from” Magic-map” at 1:2500 or where larger areas are shown 1:5000 to present at 2 per page size for readability.
- OS NGR are given for the most southerly and, where sensible, the south-westerly point of site.

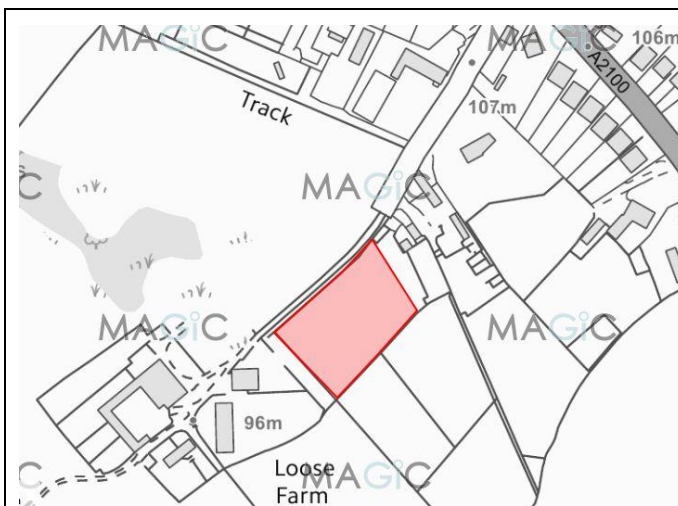
Revisions / Versions:	
Date	Item
2019-10-30	Preferred sites maps - version 1.1
2019-10-31	BA31a, BA36a, NE06a edited, NGRs added - version 1.2
2019-10-31	NE06a edited - version 1.3
2019-11-08	NE06a edited; Blackfriars site: added for completeness - version 2.1
2019-11-12	BA NS117 title corrected by meeting 2019-11-11 – version 2.2
2019-11-16	NE06a renumbered NE06, to accord with Preferred sites list - this document is now version 2.3
2020-01-02	BA11 reference number inserted on page 5 - this document is now version 2.4
2020-01-13	NE06 page 4 title amended for coherence with other documents - this document is now version 2.5

...continued



BA31a: Land to east of Glengorse (part of BA31)

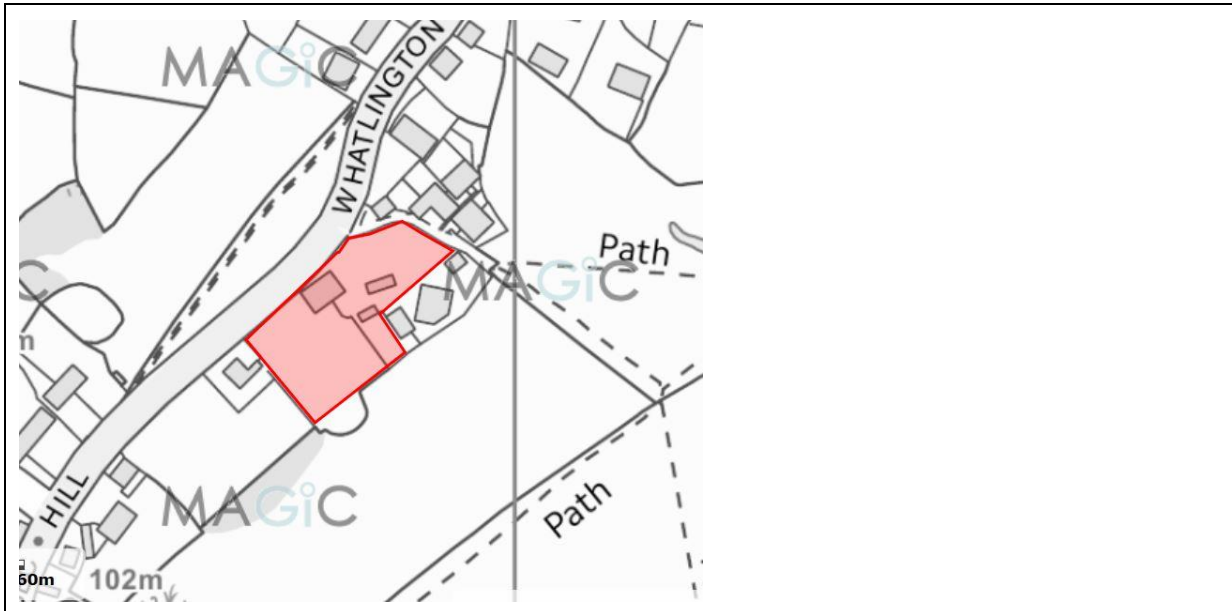
TQ 7575 1498



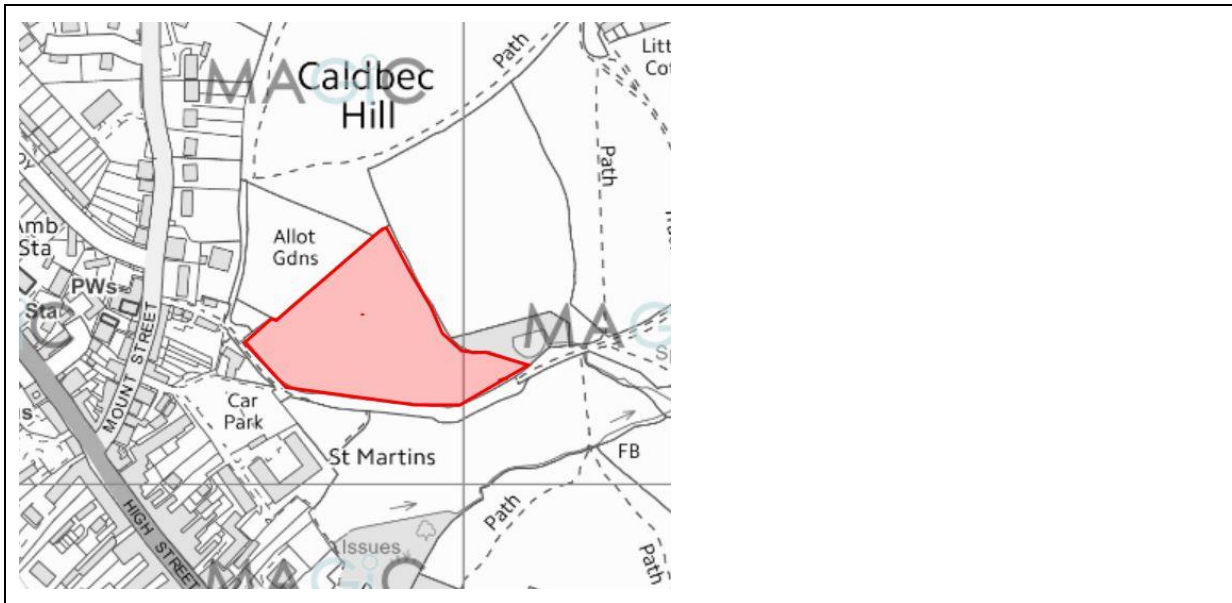
BA NS118: Land to the north-east of Cedarwood Care Home

TQ 7624 1473

...continued




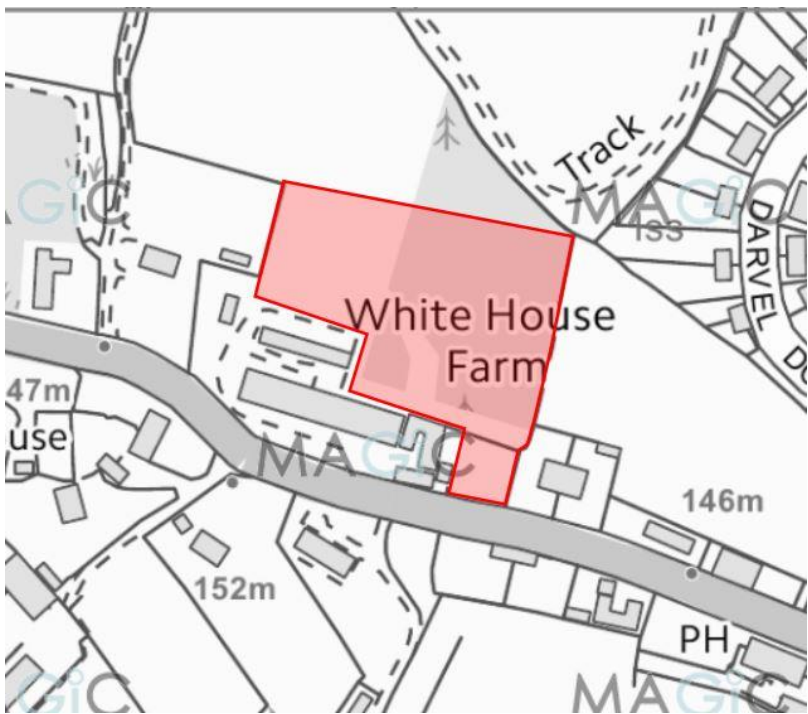
BA36a: Land at Caldbec House, Caldbec Hill (part of BA36)	TQ 7490 1657
---	--------------



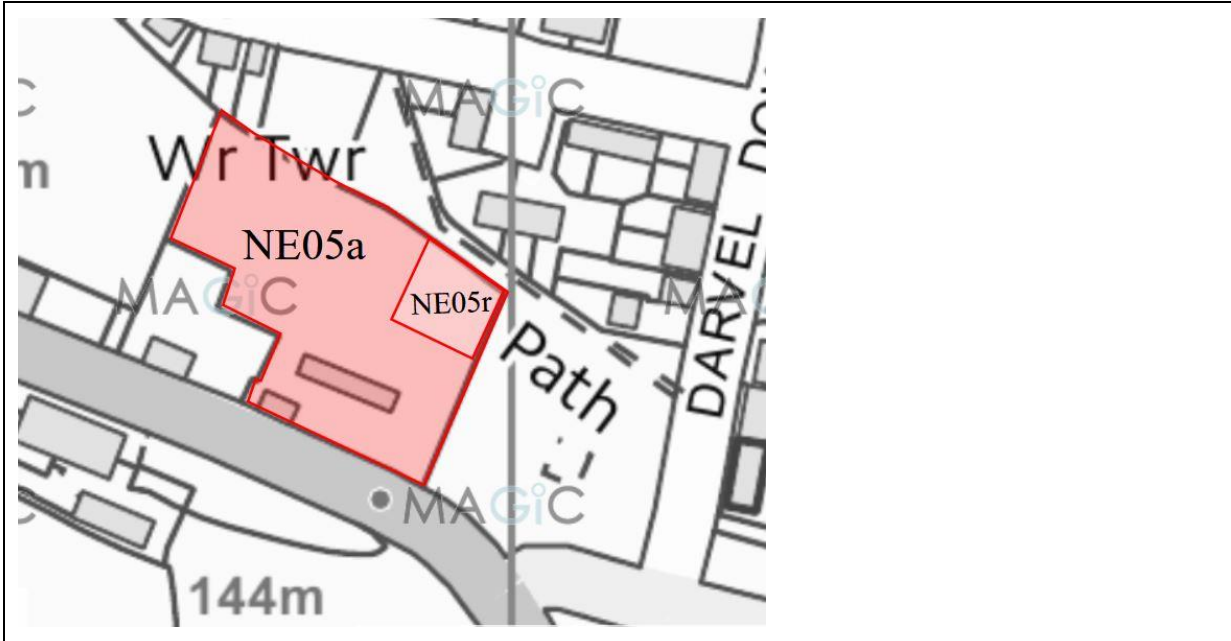
BA NS117: Land east of and adjacent to Cherry Gardens Allotments and Mount Street Car Park	TQ 7481 1612
--	--------------

...continued

	<p>TQ 7672 1679</p>
<p>BA NS103: Land to the east of Battle (west of Great Wood), Marley Lane</p>	

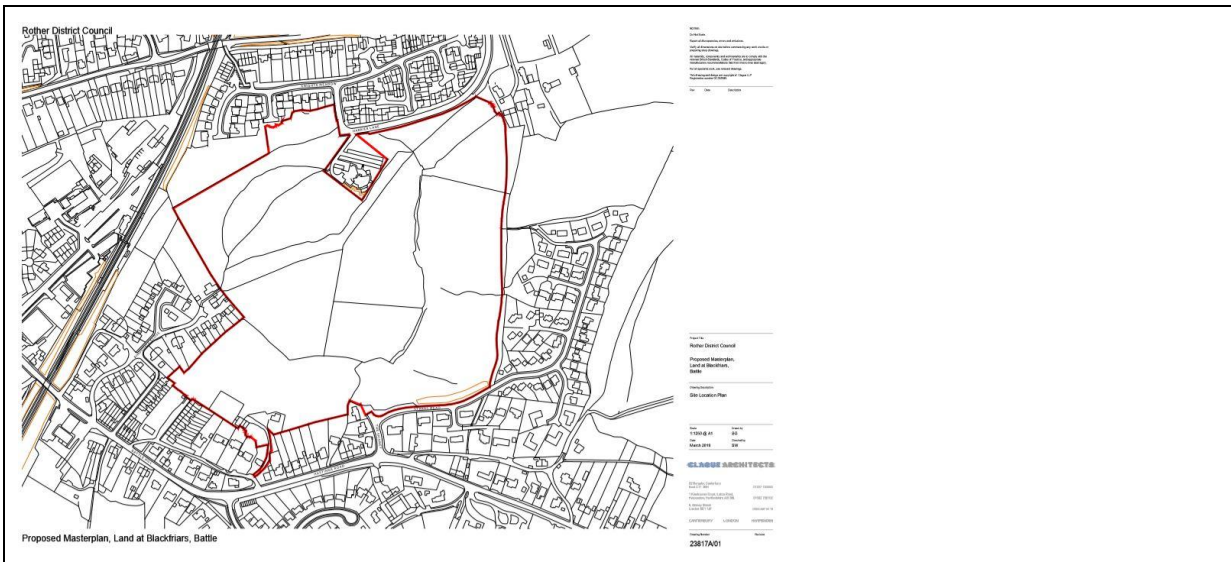
	<p>TQ 7074 1880</p>
<p>NE NS102 : White House Poultry Farm, Netherfield (part of NE06)</p>	

...continued



NE05a and NE05r: Swallow Barn, Netherfield, off B2096

TQ 7093 1873



BA11: Blackfriars, overall site (as shown in RR/2019/604/P)

TQ 7554 1536