

1. Introduction

- 1.1. The Battle Civil Parish (CP) Neighbourhood Plan (NP) Steering Group, having heard of a Planning Application in another District Council area that had been accepted on land that locals thought was Green Space and would not be built upon, decided that an analysis of Battle CP to identify Green Spaces and potentials for some form of registration was an essential part of the NP.
- 1.2. A candidate list was initially considered, by the NP Steering Group on 2017-02-01, subsequently several versions have been produced as knowledge grew.
- 1.3. The list is focussed on Local Green Spaces (LGS) – an expert view is required to make a determination about how they should be categorised for protection: such as an Asset of Community Value classification, a Common Land, a Village Green etc.
- 1.4. Subsequently an LGS Designation Candidates list was drawn up, tabulated with reference to the National Planning Policy Framework criteria for LGS qualification. This enabled the NP Steering Group to determine that the sites listed meet the three criteria (a, b, c) required by NPPF paragraph 100, thus:
 - a) in reasonably close proximity to the community it serves;
 - b) demonstrably special to a local community and holds a particular local significance, for example because of its beauty, historic significance, recreational value (including as a playing field), tranquillity or richness of its wildlife; and
 - c) local in character and is not an extensive tract of land.

2. Current List of Local Green Spaces

- 2.1. The current list of 'Local Green Spaces' has been elaborated since the candidate list which considered local concerns for small green spaces. The Battle CP Boundary map (see Annex 1) shows the three 'large-area' Green Spaces within the CP: Darwell Wood, Great Wood and Beauport Park, which each have a number of protections and provide important recreational facilities, as well as their environmental significance. The current list is now more precisely described and listed below, roughly north-west to south-east and recent additions have been included.
- 2.2. In order to use a comprehensive/unique site numbering system within all Battle CP NP documents the RDC - SHLAA potential building site numbers have been retained (e.g. NE 07). Other codes are used to designate sites with differing characteristics (e.g. proposed Green Space allocation), therefore an individual site may have more than one number used.

...continued

- 2.3 A specific NP set of numbers has been invoked for Green Spaces, numbered thus:
 NE GS 01, NE GS 02... = Netherfield Green Space number series – not priority ordered
 BA GS 01, BA GS 02... = Battle Green Space number series – not priority ordered

NOTE 1: Telham sites are included in the Battle number series (see also Annex 3)

NOTE 2: The “Battle Abbey” site under English Heritage management is not herein listed

3. **Netherfield sites** (see Annex 4 and 6)

Ref. No.	Green Space	Location	Location detail	NPPF criteria
NE GS01	Children's Play equipment area	Netherfield	Darvel Down [NE 11]	a, b, c
NE GS02	Village Green	Netherfield	Darvel Down / B2096 opposite shop [NE 07]	a, b, c
NE GS03	Green space	Netherfield	Netherfield Road	a, b, c
NE GS04	Recreation Ground	Netherfield	Off Netherfield Road	a, b, c
NE GS05	Green space in front of school	Netherfield	Darvel Down south-east	a, b, c
NE GS06	Estate green space opposite school	Netherfield	Darvel Down east, middle	a, b, c
NE GS07	School Playing field	Netherfield	East of Darvel Down	a, b, c

NOTE: The list includes some relatively small areas, such as roadside verges that are unlikely to be developed with buildings, nevertheless they are included to ensure that any roadway development does not impact them; since they are a significant component of the Battle CP street scene.

...continued

5. Battle and Telham sites (see Annex 5 and 6)

Ref. No.	Green Space	Location	Location detail	NPPF criteria
BA GS01	Netherfield Hill Allotments (8 plots)	Battle	Off Beech Close, Netherfield Hill	a, b, c
BA GS02	Watch Oak Allotments (26 plots)	Battle	Chain Lane	a, b, c
BA GS03	Virgins Croft Allotments (14 plots)	Battle	Off Virgins Lane	a, b, c
BA GS04	Kingsmead Open Space – two interconnected fields	Battle	Between Virgins Lane & Caldbec Hill	a, b, c
BA GS05	Green Space (roadside and including north-western footway and hedge/trees)	Battle	Caldbec Hill, Whatlington Road (summit) - requires defined residents car park area adjacent to road	a, b, c
BA GS06	Claverham College, playing fields	Battle	Off North Trade Road	a, b, c
BA GS07	Recreation Ground (includes Children's Play equipment areas)	Battle	North Trade Road	a, b, c
BA GS08	Teaching & Education Centre (includes grass area with seat overlooking roadway & skateboard ramp)	Battle	Off A2100 – east of roundabout	a, b, c
BA GS09	Battle & Langton CP School, playing field	Battle	South and east of school compound	a, b, c
BA GS10	Mansers Shaw (full extent south-west to be confirmed)	Battle	Between Recreation Ground & 1066 Country Walk	a, b, c
BA GS11	Guild Shaw	Battle	Off Western Avenue	a, b, c
BA GS12	Cricket Ground (and adjacent parts of [listed] ancient battlefield)	Battle	Off Park Lane, west of High Street	a, b, c
BA GS13	The Abbey "Green" (English Heritage)	Battle	High Street	a, b, c
BA GS14	Battle Abbey School, playing field	Battle	Off High Street	a, b, c
BA GS15	Cherry Gardens Allotments (40 plots)	Battle	Off Mount Street – via FP31a/track to Little Park Farm	a, b, c
BA GS16	Lake Meadow (National Trust)	Battle	Adjacent to Marley Lane	a, b, c

...continued

Ref. No.	Green Space	Location	Location detail	NPPF criteria
BA GS17	Recreation Ground (includes Children's Play equipment area)	Battle	Coronation Gardens	a, b, c
BA GS18	Recreation Ground (includes Children's Play equipment area)	Telham	Off Hastings Road, Telham	a, b, c
BA GS19	Green Space, Telham	Telham	West side of A2100, Hastings Road/Telham Lane junction	a, b, c
BA GS 20	Green space with Heritage Trail marker/seat	Battle	Beside Marley Lane	a, b, c
BA GS 21	Glengorse - garden	Battle	Garden adjacent to former PW	a, b, c
BA GS 22	Glengorse – central driveway mound	Battle	Specimen trees in front of house	a, b, c
BA GS 23	Cemetery	Battle	Off Marley Lane	a, b, c
BA GS 24	Bowling Green	Battle	Station Road, next to Senlac Inn	a, b, c
BA GS 25	Roundabout with 1066 Battle Memorial sculpture	Battle	Junction of A210, London Road and North Trade Road	a, b, c
BA GS 26	Market Square – grass verge, garden and trees & "bandstand"	Battle	Market Square	a, b, c
BA GS 27	Caldbec Hill Arboretum	Battle	Off Whatlington Road with PRow access	a, b, c
BA GS 28	Green Space, Hastings Road, trees & daffodils planting	Battle	South side - east of Glengorse junction	a, b, c

NOTE: The list includes some relatively small areas, such as roadside verges that are unlikely to be developed with buildings, nevertheless they are included to ensure that any roadway development does not impact them; since they are a significant component of the Battle CP street scene.

...continued

5. Historic Farmsteads (see Annex 2)

An important characteristic of the Civil Parish is that it contains many historic farmsteads and notably has an above average coverage of small farms that are typically half the national average farm area size. The NP Steering Group believe that the historic farmsteads and small farms structure shall be considered unsuitable for any housing development and that such land as remains should be encouraged to be kept and used as low-input farming.

6. Sites of environmental importance

The CP has four Sites of Special Scientific Interest (SSSI) *within* its boundary:

6.1	Darwell Wood	37.6 Ha	mainly hornbeam coppice (PAWS)
6.2	River Line	1.87 Ha	geological value – inlier gorge
6.3	Blackhorse Quarry	0.19 Ha	geological value (adjacent to covered reservoir)
6.4	Hemingfold Meadow	4.9 Ha	meadow grasses and wildflowers

There are several other SSSIs in the proximity of the CP – all shall be afforded the maximum protection from any development as prescribed in current legislation, *including* ‘guard areas’ around them.

NOTE: The on-line DEFRA Magic map can be used to display the ‘guard areas’.

There could potentially be other sites within the CP, so far undesignated for their environmental importance – one is presently listed for further consideration to the HW-AONB:

6.5	Burnt Chimney Farm	4.3 Ha	unimproved grassland meadows (x2) with yellow rattle / orchid populations
-----	--------------------	--------	--

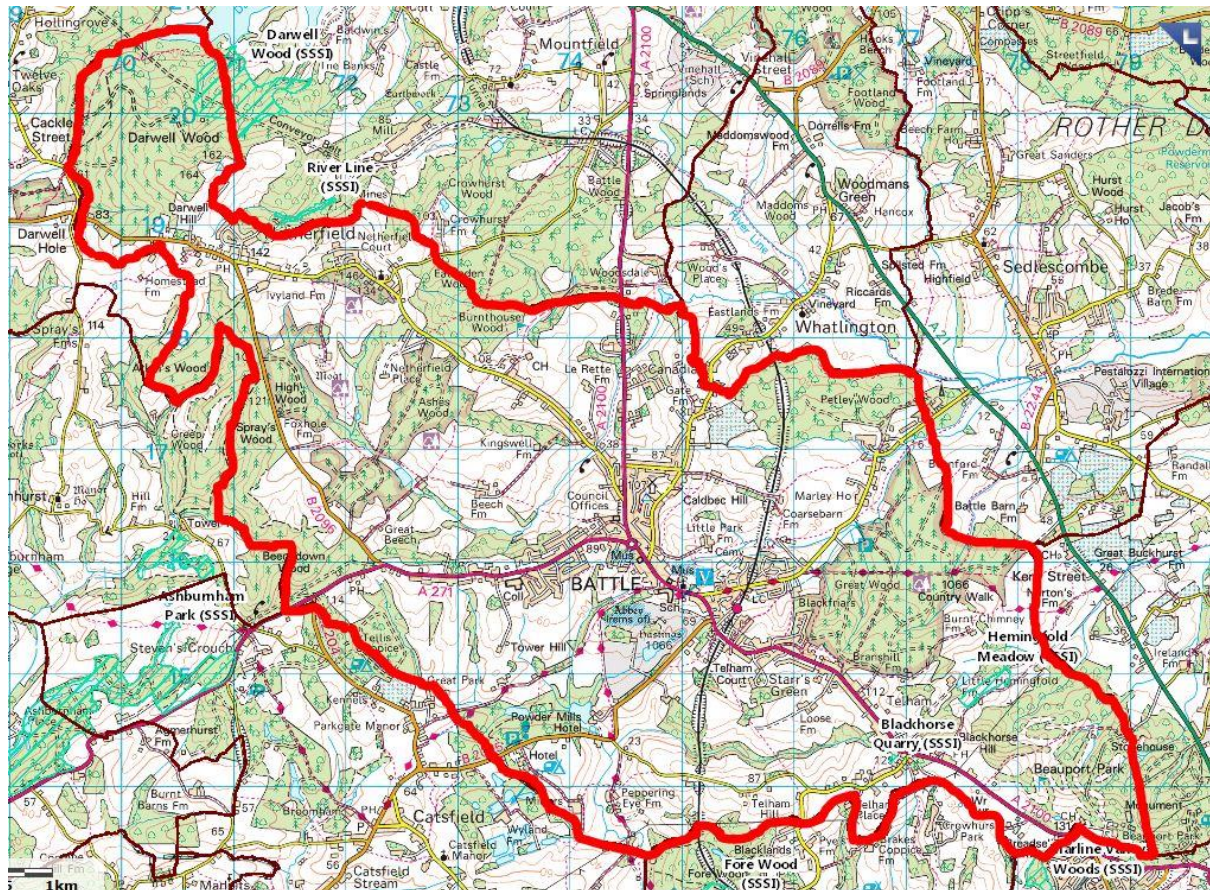
(see also AONB Field & Heath map)

7. Ancient Woodland (see Annex 3)

Battle CP has a high percentage of woodland by national averages, much of which is designated as Ancient Woodland and has AONB Management Plan objective W1 status – namely that it should be maintained as ancient woodland. Many of the woods maybe so called Plantation on Ancient Woodland Sites (PAWS), nevertheless they contain species rich ecology that provides both recreation and small scale commercial activity. Without exception the NP Steering Group believe that no housing development should be permitted in these woodland areas.

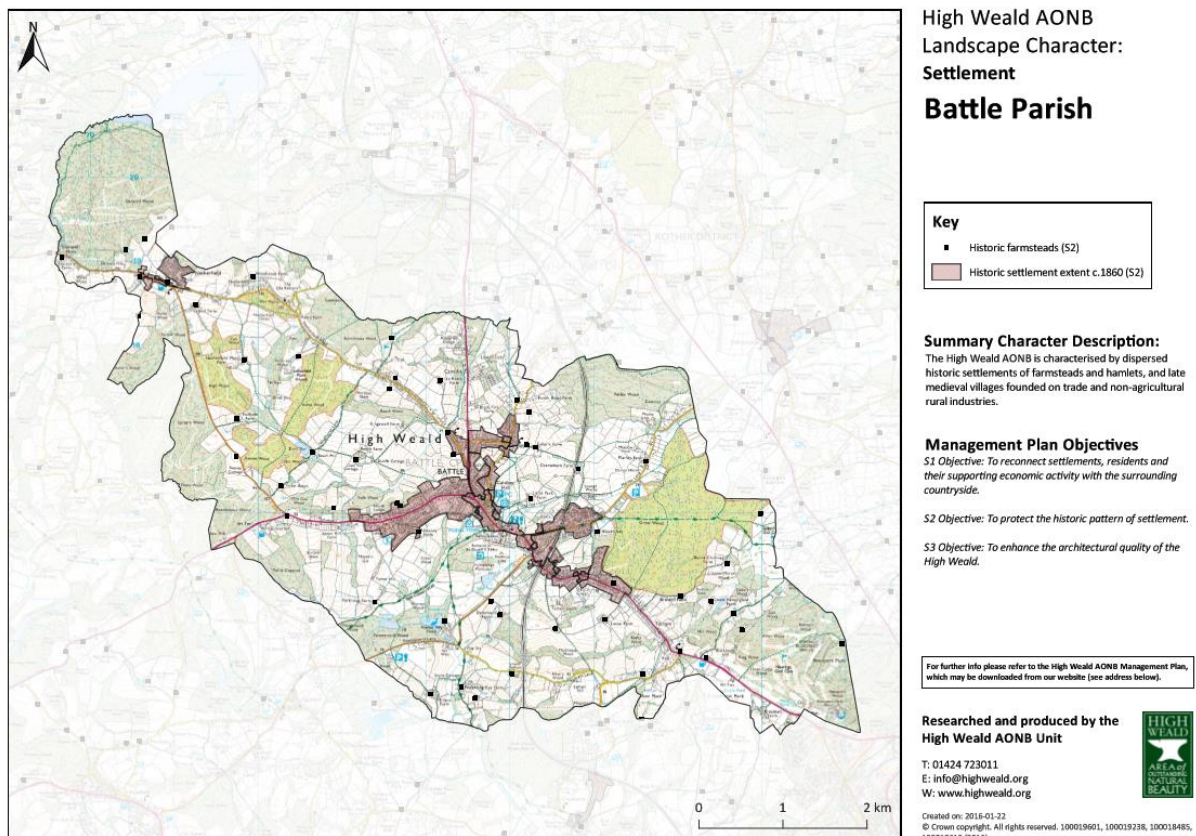
...continued

Annex 1: Battle Civil Parish – boundary (shown superimposed on OS map)



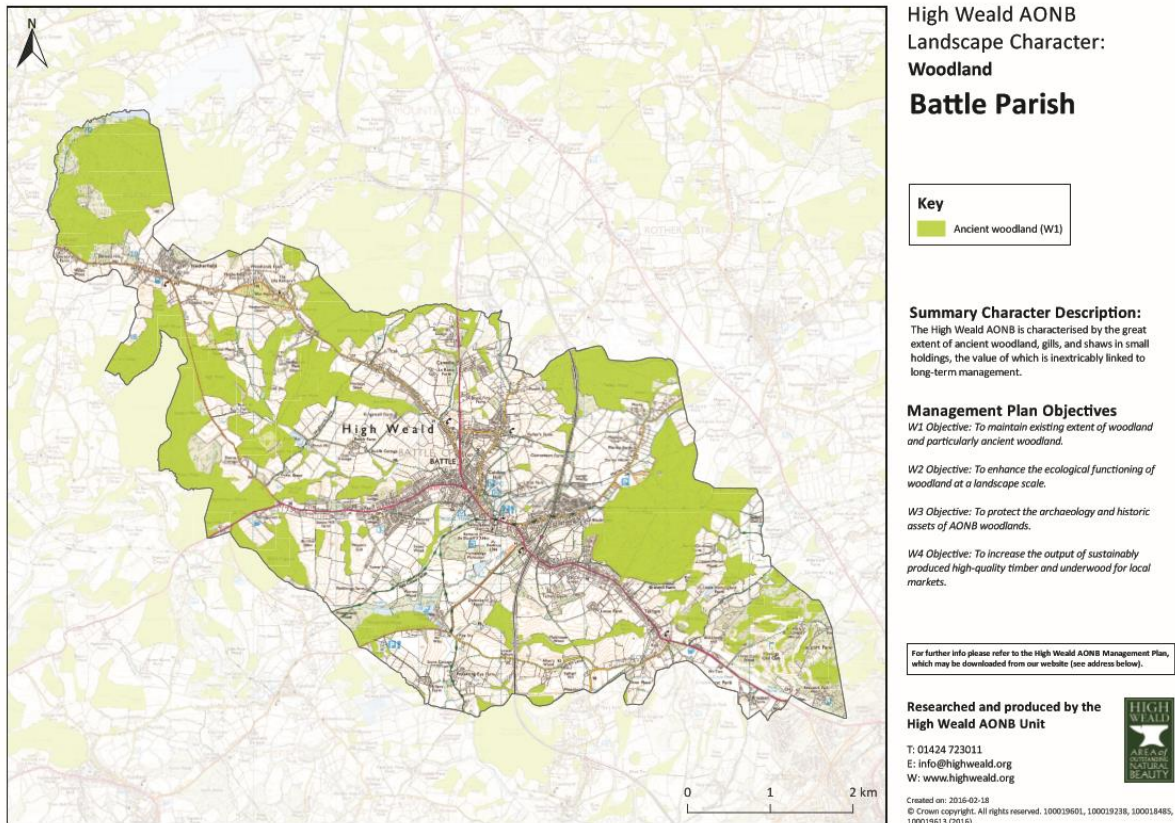
...continued

Annex 2: Historic Farmsteads



...continued

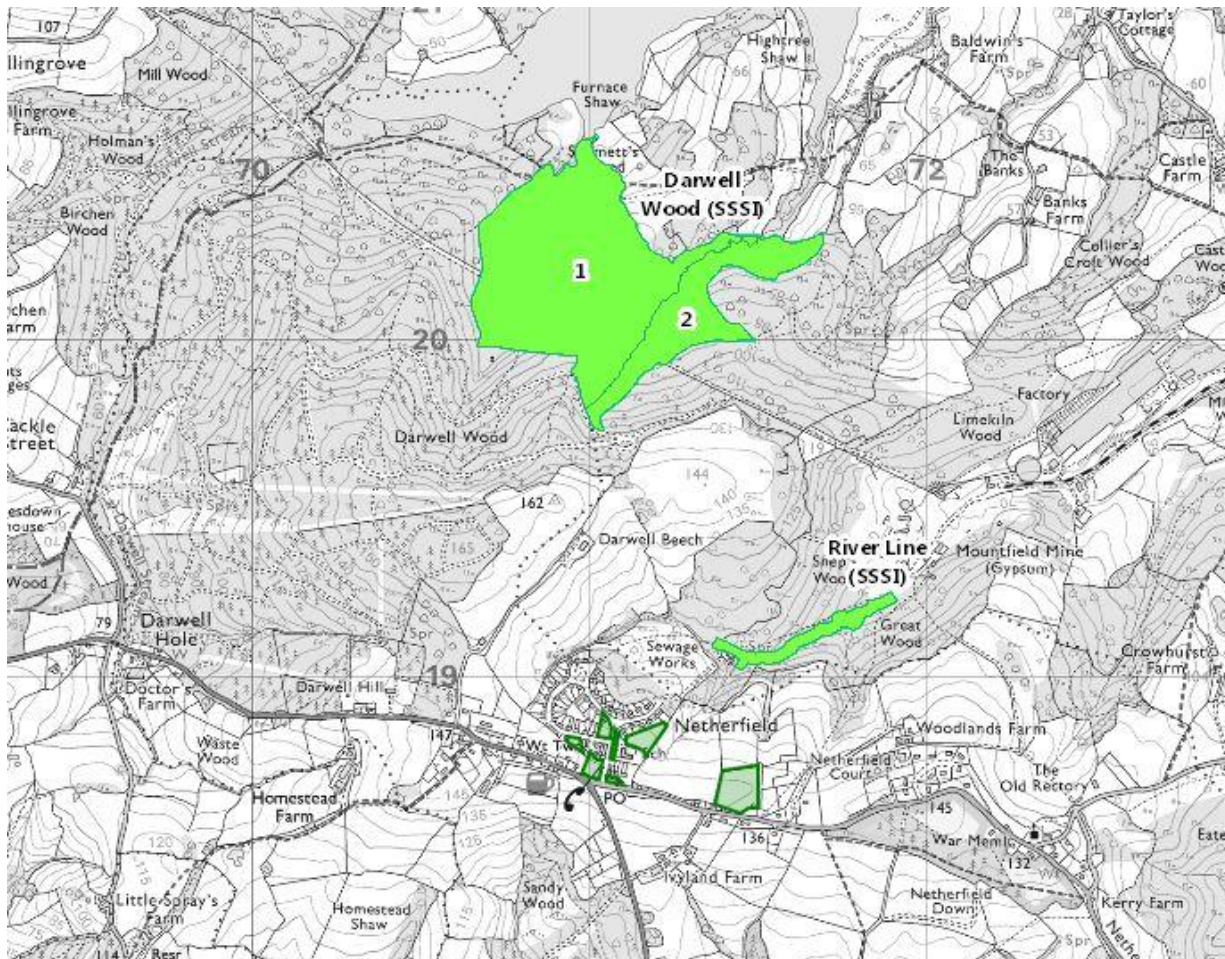
Annex 3: Ancient Woodland



NOTE: Battle Great Wood is marked on the map as ancient woodland. It is classified as a Plantation on an Ancient Woodland Site (PAWS) – i.e. the site is believed to have been continuously wooded since at least 1600AD. Even though it has been re-planted at some point in its history and is now not Ancient Semi-Natural Woodland (ASNW), it nevertheless falls under the overall ancient woodland umbrella (PAWS + ASNW).

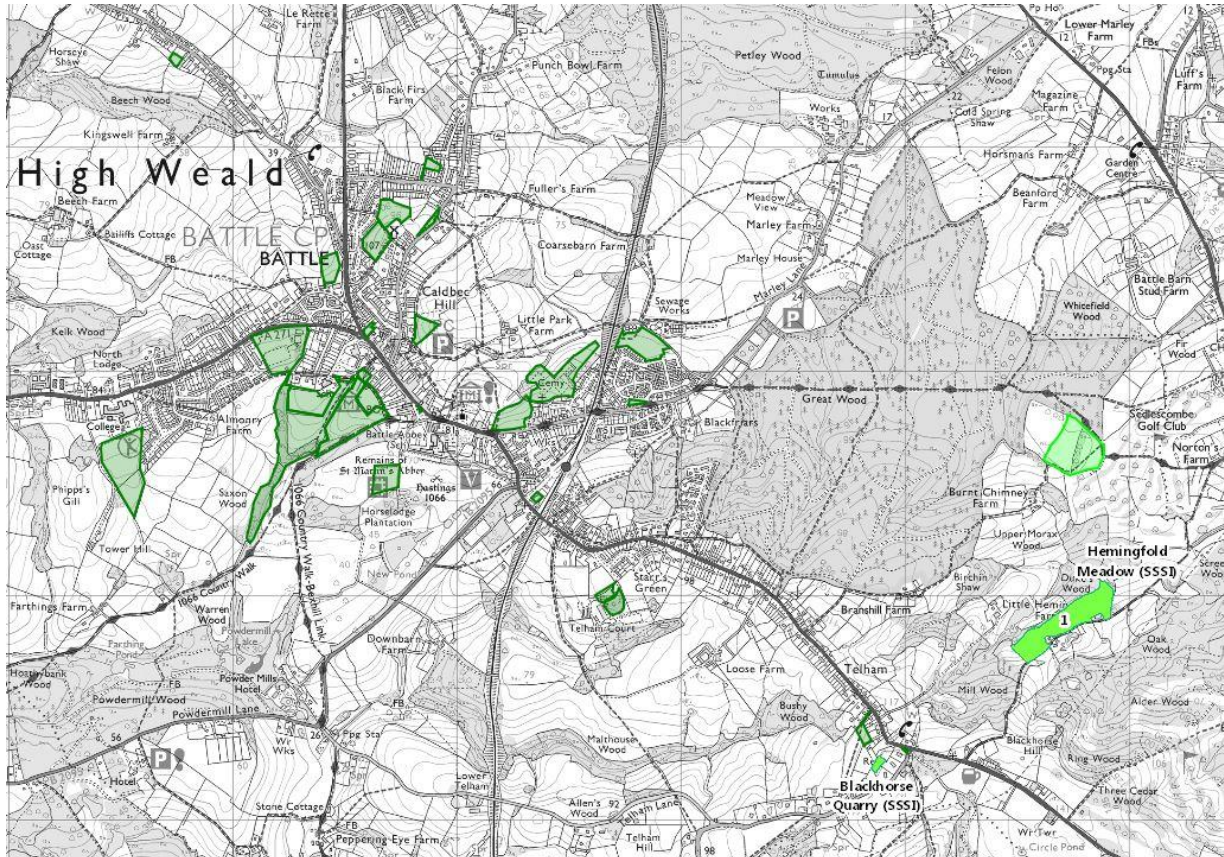
...continued

Annex 4: Netherfield sites and SSSIs (most sites indicative locations – not at a specific scale)



...continued

Annex 5: Battle and Telham sites and SSSIs (most sites, indicative locations – not at a specific scale)



NOTE Site north-east of Burnt Chimney Farm is the site noted in Section 6.5

...continued


Annex 6: Netherfield, Battle and Telham sites

(indicative locations – not at a specific scale)

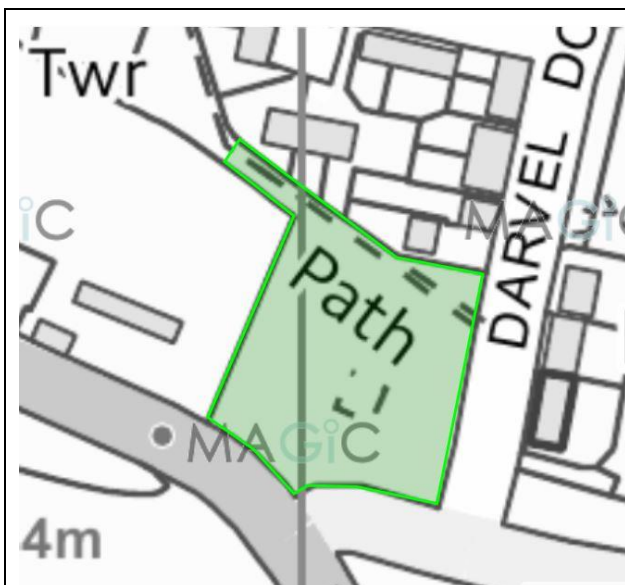
The following plans show each individual site at readable scale to indicate the site outline.

NOTES:

- Plans are not at a specific scale – but generally taken from "Magic-map" at 1:2500 or where larger areas are shown 1:5000 to present at 2 per page size for readability.
- OS NGR are given for the most southerly and where sensible south-westerly point of site.

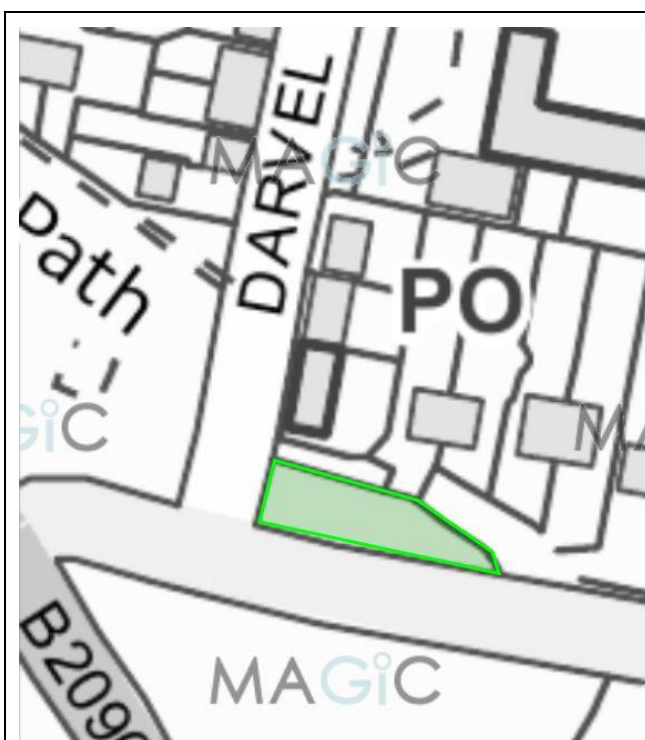
	
NE GS01 Children's Play equipment area	TQ 7098 1877

...continued



NE GS02 Village Green

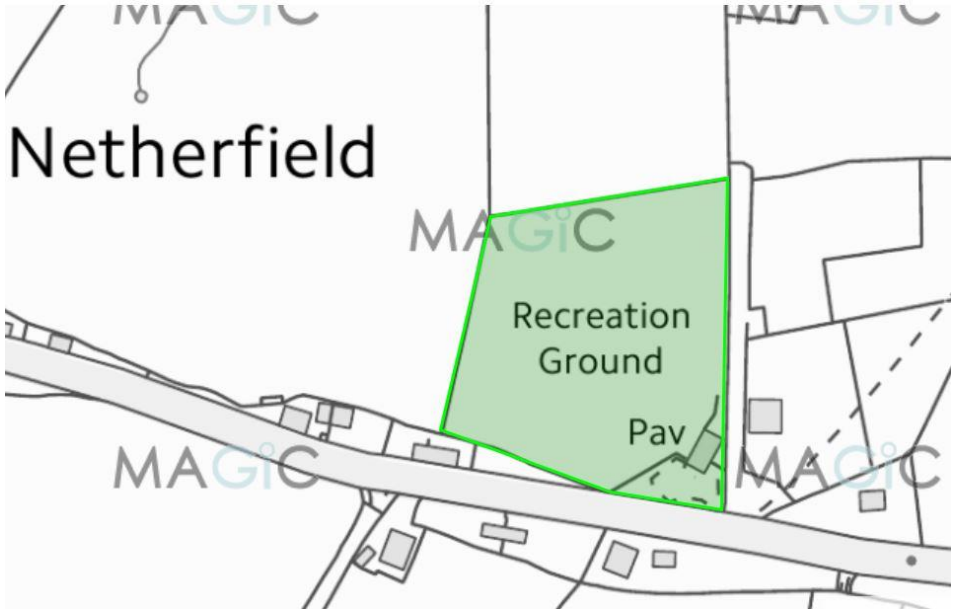
TQ 7099 1869




NE GS03 Green space

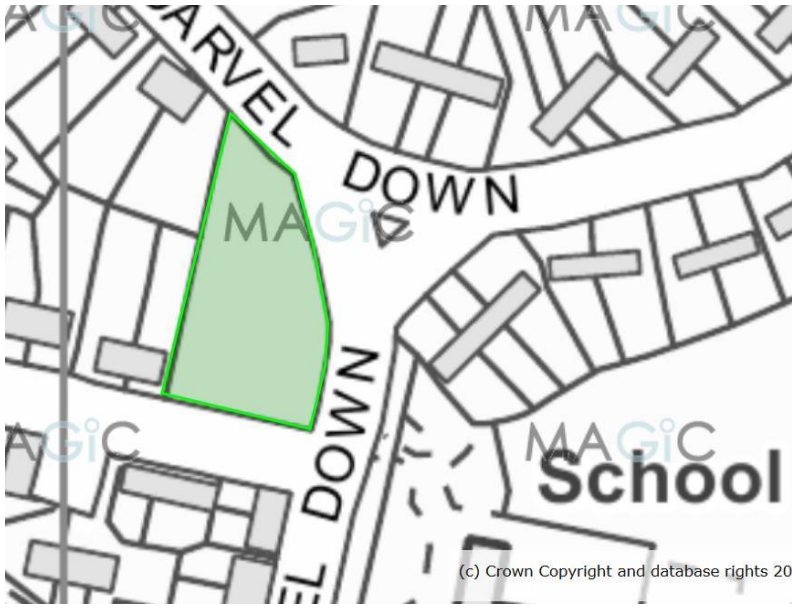
TQ 7106 1868


...continued

 <p>The map shows a green-shaded area labeled 'Recreation Ground' with a 'Pav' (pavilion) nearby. The area is situated in Netherfield, with a road and buildings visible. The word 'MAGiC' is repeated across the map.</p>	
NE GS04 Recreation Ground	TQ 7144 1859

 <p>The map shows a green-shaded area in front of a school. The area is situated near 'DARVEL DOWN' and a 'PO' (post office). The word 'MAGiC' is repeated across the map.</p>	
NE GS05 Green space in front of school	TQ 7106 1875

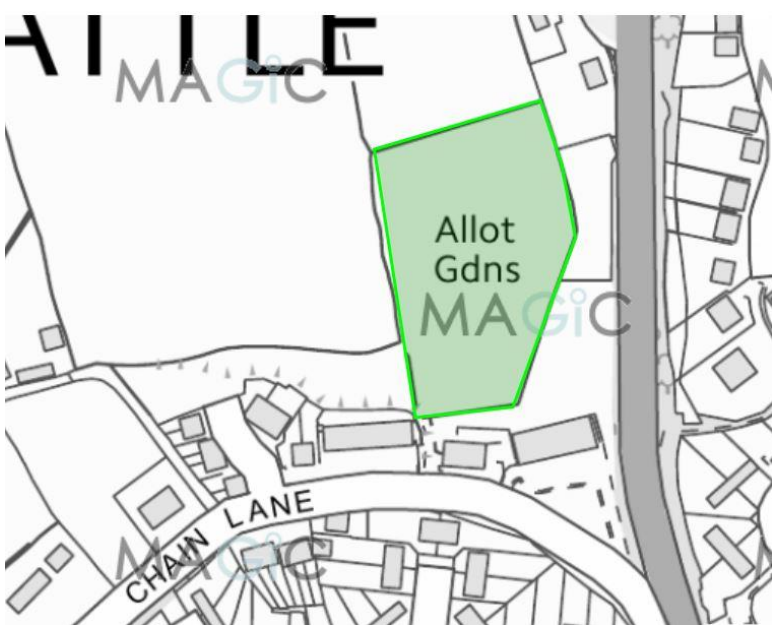
...continued

	
NE GS06 Estate green space opposite school	TQ 7105 1881

	
NE GS07 School Playing field	TQ 7117 1876

...continued

 <p>The map shows a street layout with 'NETHERFIELD HILL' written along a diagonal road. A green-shaded polygon, representing the allotments, is located between the road and a row of buildings labeled 'Netherfield Hill Cottages'. A 'MAGIC' watermark is visible across the map.</p>	
BA GS01: Netherfield Hill Allotments - 8 plots	TQ 7376 1734

 <p>The map shows a street layout with 'CHAIN LANE' written along a curved road. A green-shaded polygon, representing the allotments, is located above the lane. The text 'Allot Gdns' is written inside the polygon. A 'MAGIC' watermark is visible across the map.</p>	
BA GS02: Watch Oak Allotments - 26 plots	TQ 7441 1639

...continued



BA GS03: Virgins Croft Allotments - 14 plots

TQ 7484 1685



BA GS04: Kingsmead Open Space – two interconnected fields

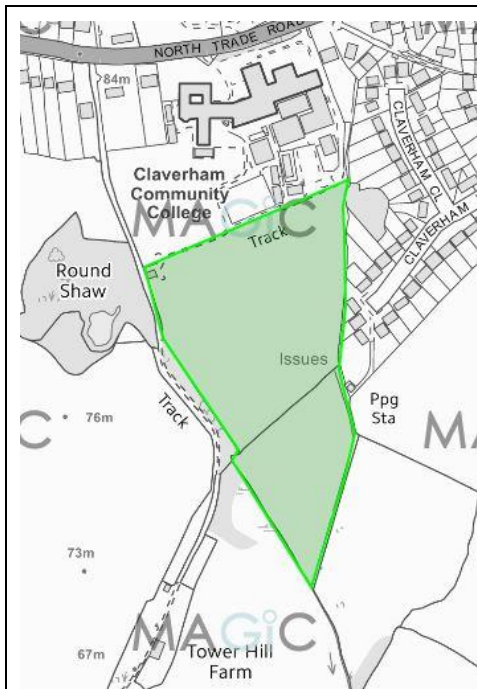
TQ 7463 1649

...continued



BA GS05: Green Space – Caldbeck Hill

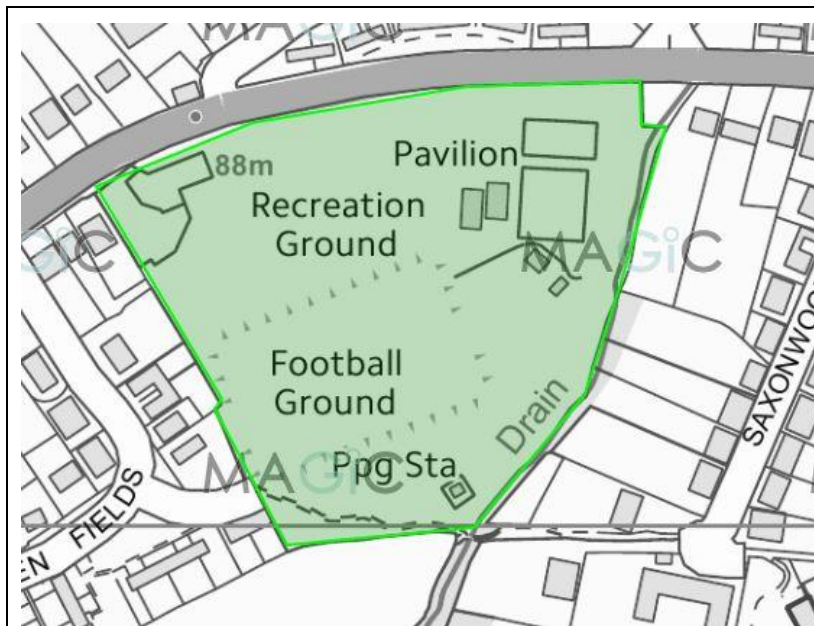
TQ 7481 1959



BA GS06: Claverham College, playing fields

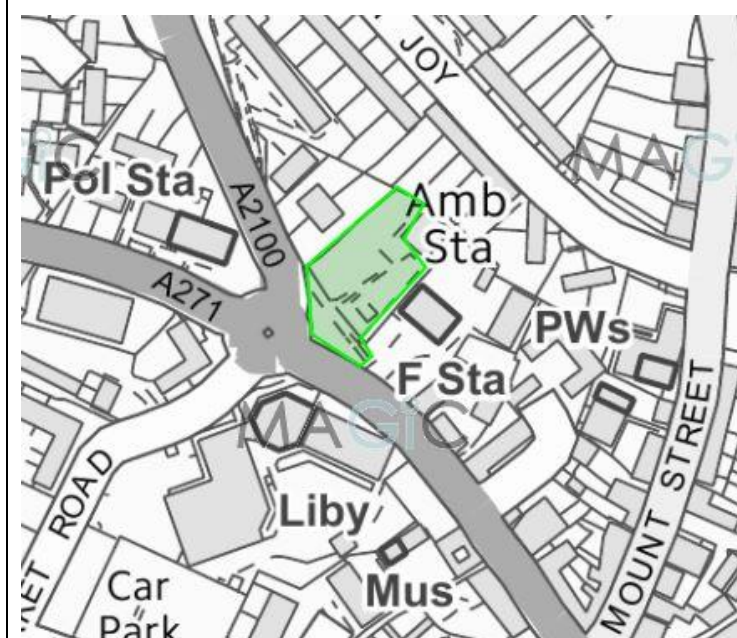
TQ 7356 1534

...continued



BA GS07: Recreation Ground - NTR

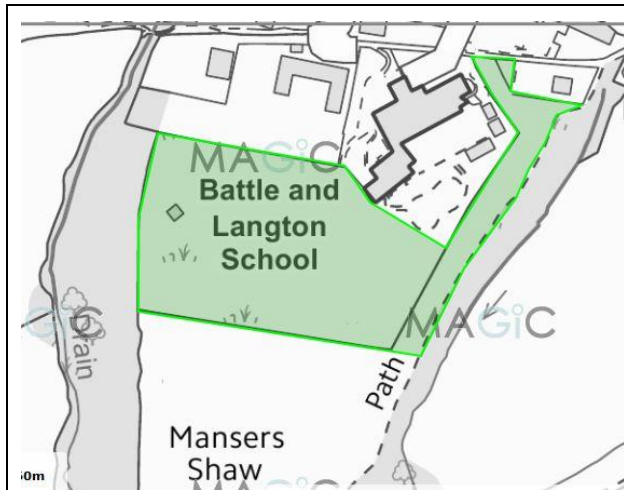
TQ 7417 1598



BA GS08: Teaching & Education Centre

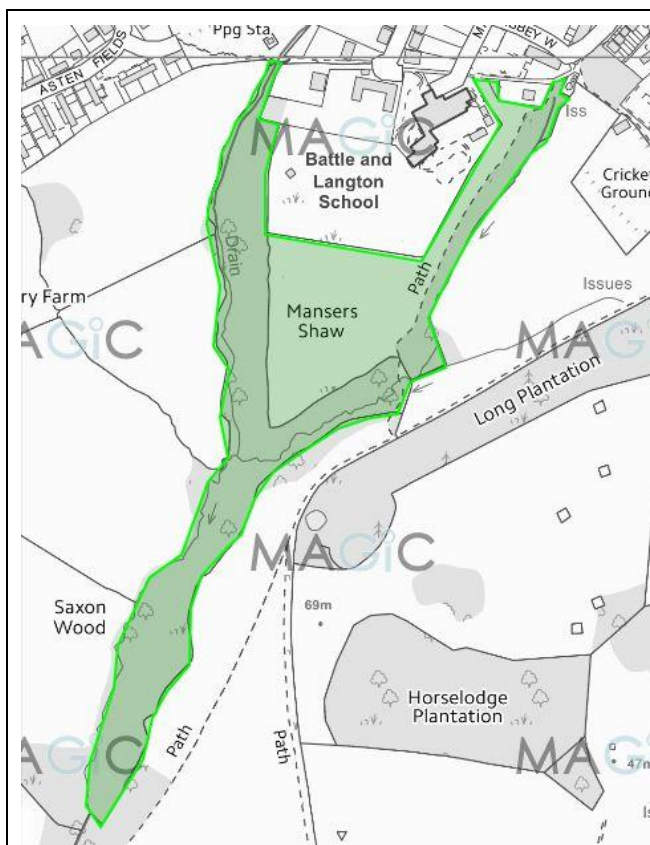
TQ 7460 1614

...continued



BA GS09: Battle & Langton CP School, playing field

TQ 7424 1582



BA GS10: Mansers Shaw

TQ 7407 1523

...continued



BA GS11: Guild Shaw

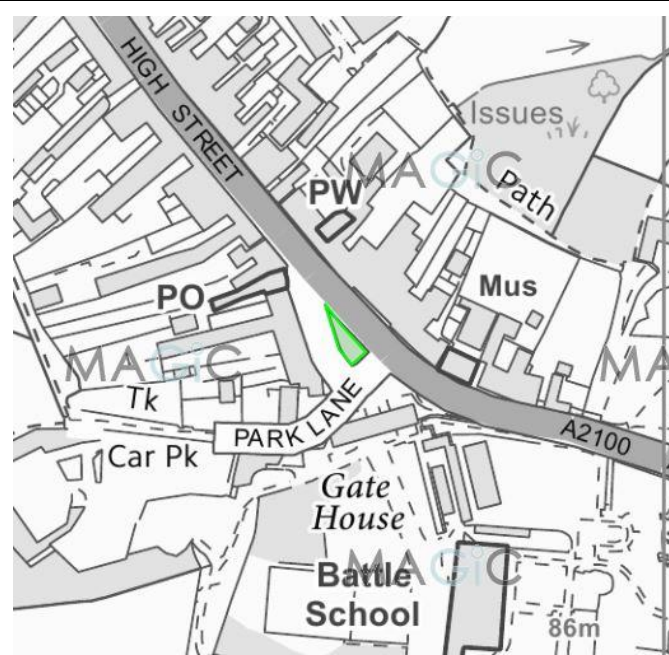
TQ 7459 1594



BA GS12: Cricket Ground and surrounding field

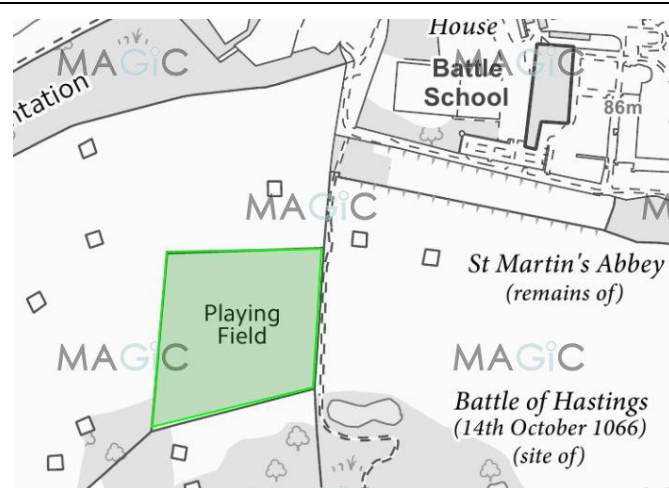
TQ 7437 1562

...continued



BA GS13: The Abbey Green (English Heritage)

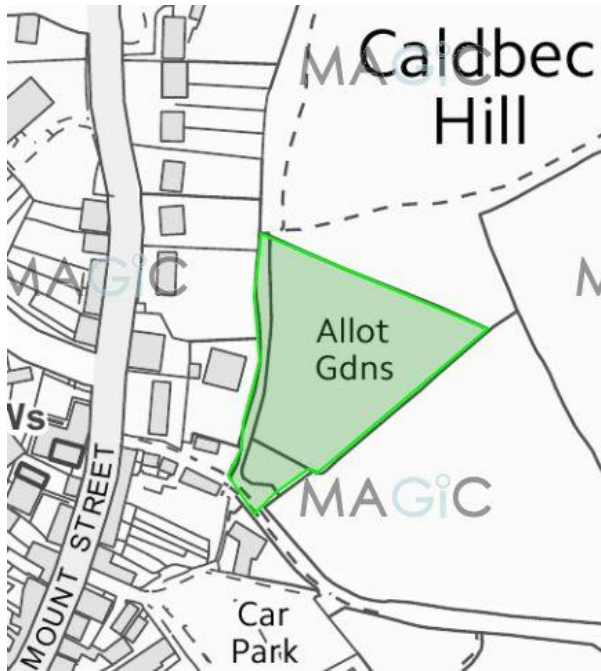
TQ 7483 1581



BA GS14: Battle Abbey School, playing field

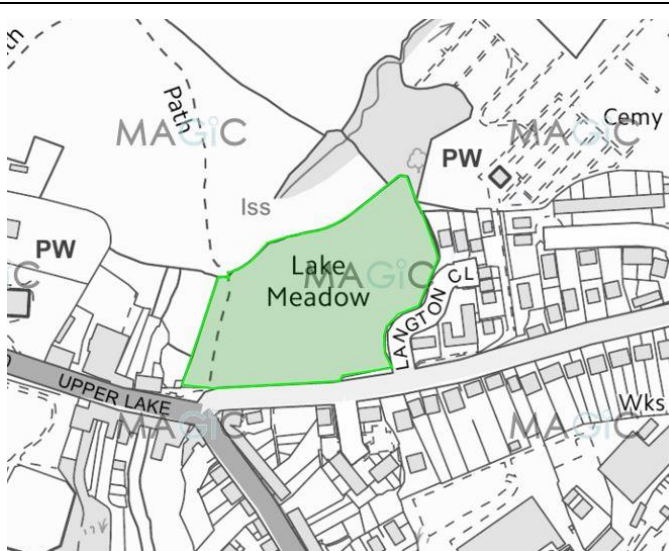
TQ 7462 1545

...continued



BA GS15: Cherry Gardens Allotments - 40 plots

TQ 7481 1611



BA GS16: Lake Meadow (National Trust)

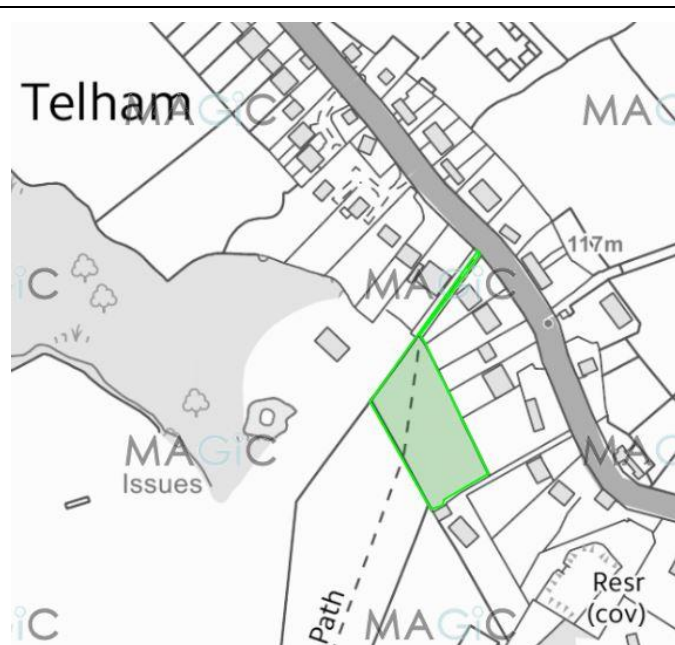
TQ 7515 1574

...continued



BA GS17: Recreation Ground - Coronation Gardens

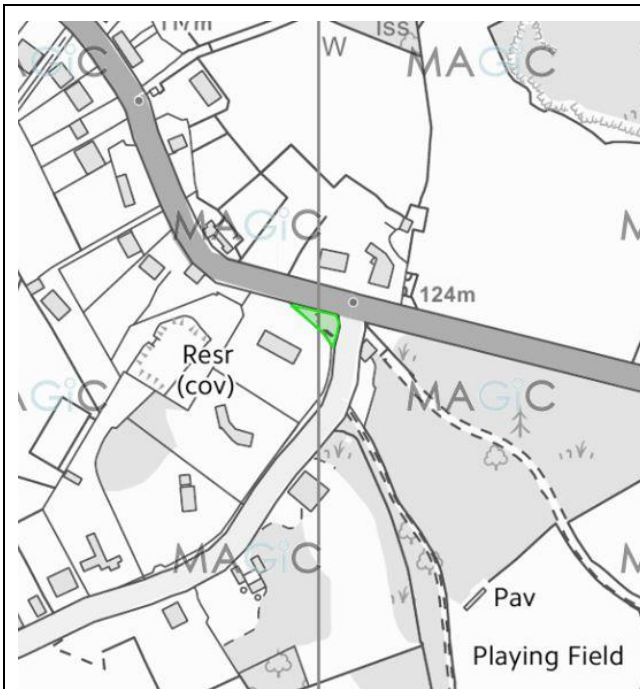
TQ 7583 1604



BA GS18: Recreation Ground - Telham

TQ 7681 1433

...continued



BA GS19: Green Space - Telham

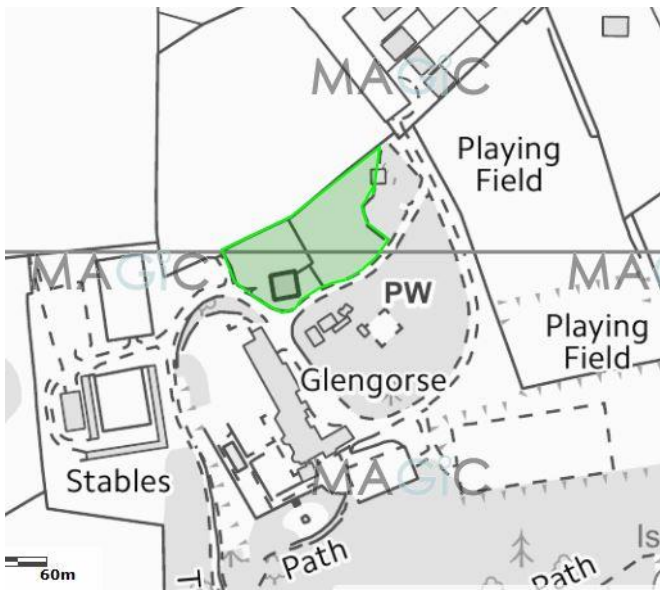
TQ 7700 1429

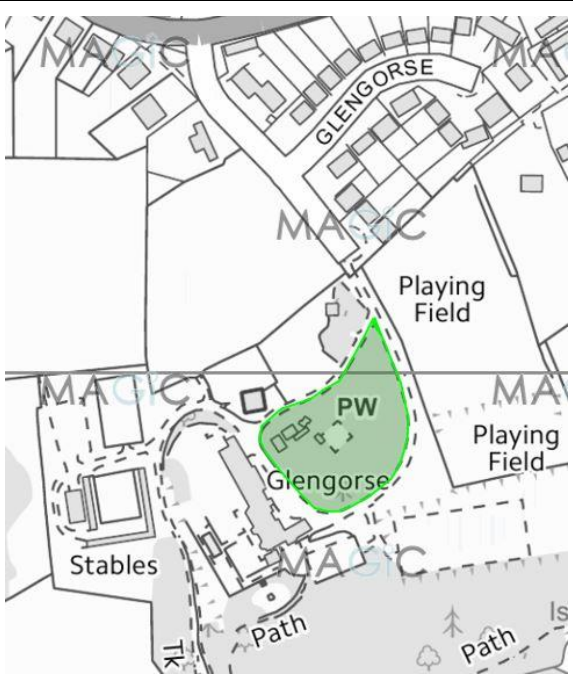


BA GS20: Green Space - Heritage Trail

TQ 7576 1584

...continued

 <p>A map showing the Glengorse garden area highlighted in green. The map includes labels for 'Playing Field', 'PW', 'Glengorse', 'Stables', 'Path', and 'Is'. A scale bar indicates 60m.</p>	
BA GS21: Glengorse garden	TQ 7565 1497

 <p>A map showing the Glengorse - central driveway area highlighted in green. The map includes labels for 'Playing Field', 'PW', 'Glengorse', 'Stables', 'Path', and 'Is'.</p>	
BA GS22: Glengorse - central driveway	TQ 7569 1491

...continued

 <p>A map showing a green-shaded area labeled 'Cemy' (Cemetery) and 'PW'. The area is bounded by a green line. Surrounding features include a 'Weir', 'Path', 'Lake meadow', and 'NORMAN CLOSE'. The 'MAGiC' logo is visible in the background.</p>	
BA GS23: Cemetery	TQ 7532 1587

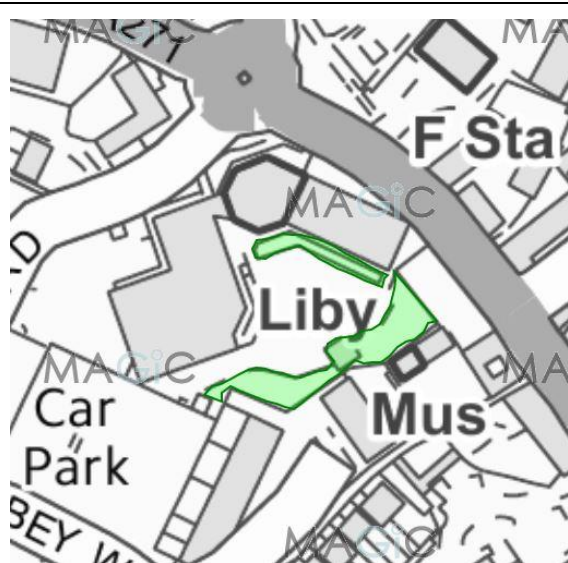
 <p>A map showing a green-shaded rectangular area labeled 'Bowling Green'. The area is located near a 'Station' and 'STATION APPROACH'. Surrounding features include 'LOWER LAKE', 'B2095', 'A2100', 'ABBOTS CL', and 'Track'. The 'MAGiC' logo is visible in the background.</p>	
BA GS24: Bowling Green	TQ 7535 1541

...continued



BA GS25: Roundabout

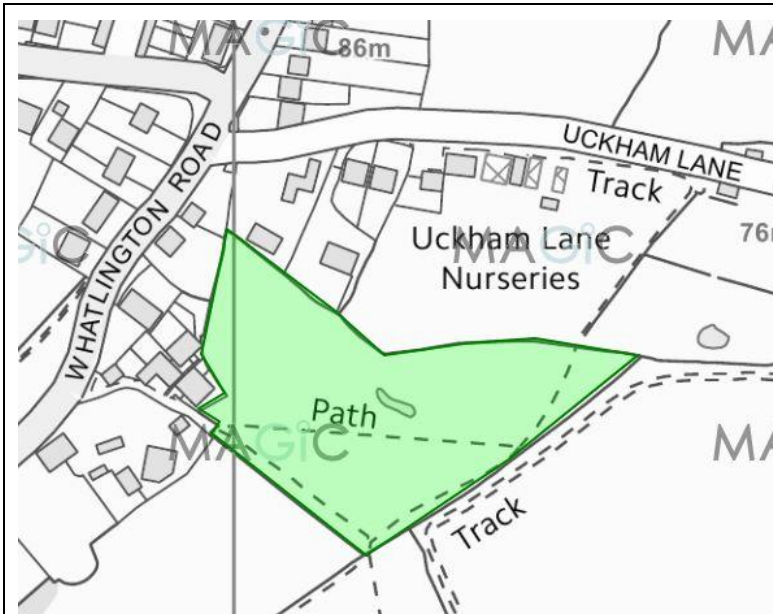
TQ 7457 1616



BA GS26: Market Square

TQ 7456 1606

...continued



BA GS27: Caldbeck Hill Arboretum

TQ 7506 1658



BA GS28: Green Space, Hastings Road

TQ 7562 1520

...continued

Revisions / Versions:	
Date	Item
2017-05-20	comprehensive numbering system developed
2017-05-20	BA GS01 confirmed by BTC to be extant - retained
2017-05-20	BA GS08 added
2017-05-20	NE GS05 added
2017-05-20	NE GS06 added
2017-05-26	minor text edits
2018-06-15	edits and additions (NE GS07, BA GS19 to GS 24) – version 5
2019-04-16	Watermark removed
2019-04-29	<p>V6 Updated to reference to NPPF_Feb 2019, “Open space and recreation, paragraphs 96 to 100, as requested at SG meeting 2019-04-17.</p> <p>Para 1.4 added; Tables in Section 3 and 4 redrawn with declared NPPF ratings and new NOTE.</p> <p>Removed ‘Notional Green Belt’, since now covered in Strategic Gaps document; Annex 6 (2019-04-11).</p> <p>By reference back to LGS Candidates v2, added four sites: BA GS 25-28, which meet current NPPF criteria.</p>
2019-04-30	V6.1 NPPF paragraph 100 criteria (a, b, c) added to para 1.4