

Planning Update

with Margaret Howell
Battle Town Councillor

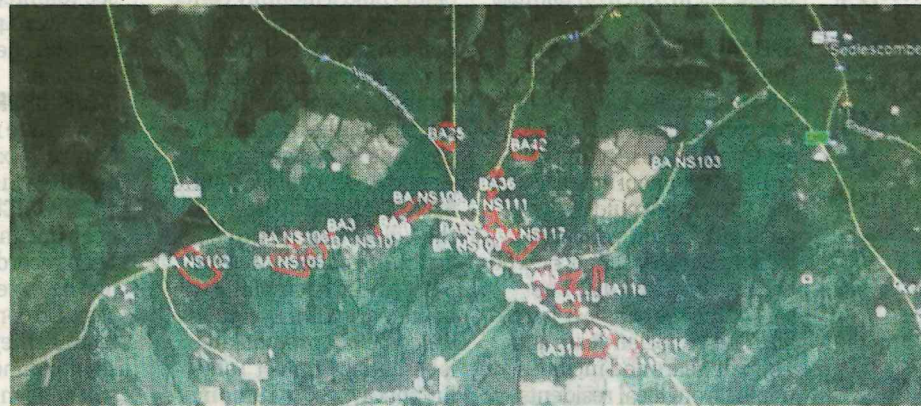
Battle Neighbourhood Plan
Your monthly update

Battle Neighbourhood Plan

The strategic objective within the Battle Neighbourhood Plan is "to support the former market town and tourist centre role and character of Battle and to conserve its historic core and setting".

In this context, Battle Town Council asked AECOM, (an independent company appointed by the Department for Communities and Local Government (DCLG) to assist in the development of Neighbourhood Plans) to undertake an assessment of the sites that have been identified as potential candidates for housing in the Neighbourhood Plan, including sites from the Strategic Housing Land Availability Assessment (SHLAA) which were identified in the 2013 review by Rother District Council officers and sites submitted following the Neighbourhood Plan Call for Sites.

All these sites were assessed to determine which of them were appropriate for allocation to the Plan, in particular whether they comply with both the National Planning Policy Framework and



the strategic policies of the Local Plan Strategy. From this pool of sites, it would be determined which were the best sites to meet the objectives of the Neighbourhood Plan. This will help to ensure that the Neighbourhood Plan site selection process which is expected to follow these site assessments will be robust enough to meet the basic conditions considered eventually by the Independent Examiner, as well as any potential legal challenge by developers

and other interested parties...

The SHLAA identifies sites with the potential for housing, assessing their potential and whether they are likely to be developed. It was intended to support the delivery of land for housing to meet Rother's housing requirements.

The Steering Group has now received the report from AECOM, and following that report established a sub group to analyse the findings. Broadly, there was a

consensus on the site allocation, although there were some differences, probably due to a lack of familiarity with the area. At the Group Meeting on 13 December, this report, subject to amendments based on use of our local development criteria, was formally accepted.

Within Battle, (including Telham) some forty seven sites were considered, of which three were considered suitable and developable with a further two sites considered as potentially suitable. Another two sites were deemed suitable as broad locations. Forty sites were found unsuitable.

Within Netherfield ten sites in total were looked at, of which three were judged to be potentially suitable after further investigation. Seven sites were found unsuitable.

The voluntary Steering Group is continuing to make progress but does welcome additional help from fellow residents. More information can be found on our website: battleneighbourhoodplan.co.uk or you can email: enquiries@battleneighbourhoodplan.co.uk